

DEPARTMENT OF THE ARMY TECHNICAL MANUAL

ORGANIZATIONAL MAINTENANCE REPAIR PARTS AND SPECIAL TOOLS  
LISTS  
FOR  
CAMERA, STILL PICTURE KA-60C  
(NSN 6720-00-890-7610)

Headquarters, Department of the Army, Washington, DC,  
27 October 1978

Current as of 14 June 1978

**REPORTING OF ERRORS**

You can help improve this manual by calling attention to errors and by recommending improvements and stating your reasons for the recommendations. Your letter or DA Form 2028 (Recommended Changes to Publications and Blank Forms), should be mailed direct to the Commander, US Army Communications and Electronics Materiel Readiness Command, ATTN: DRSEL-ME-MQ, Fort Monmouth, NJ 07703. A reply will be furnished direct to you.

Table of Contents

	Page	Illus Figure
SECTION I. Introduction.....	1	
II. Repair parts list.....	5	
Group 00 Camera, Still Picture KA-60C.....	5	1
01 Body, Drive LA-411A (1A1) (No parts authorized)		
0101 AEC assembly (1A1A1) (No parts authorized)		
0102 Cam-puck assembly (1A1MP160) (No parts authorized)		
0103 Motor-gear assembly (1A1A3) (No parts authorized)		
0104 Circuit card assembly (1A1A4) (No parts authorized)		
0105 Prism assembly (1A1MP275) (No parts authorized)		
0106 Shaft coupling assembly (1A1MP342) (No parts authorized)		
02 Camera Control LA-412A (No parts authorized)		
0201 Panel assembly (1A2A1) (No parts authorized)		
020101 Interconnecting board assembly (1A2A1A1) (No parts authorized)		
0202 Control board assembly (1A2A4) (No parts authorized)		
0203 Scan board assembly (1A2A3) (No parts authorized)		
0204 AEC board assembly (1A2A5) (No parts authorized)		
0205 Heat sink assembly (1A2A6) (No parts authorized)		
0206 Power supply assembly (1A2A2) (No parts authorized)		
020601 Circuit card assembly (1A2A2A1) (No parts authorized)		
03 Control Panel Assembly LA-413A (1A3) (No parts authorized)		
0301 Heat sink card assembly (1A3A1) (No parts authorized)		
030101 Circuit card assembly (1A3A1A1) (No parts authorized)		

\*This manual supersedes TM 11-6720-242-20P, 24 January 1977.

Page      Illus  
            Figure

Group 04	Film Magazine LA-410A (No parts authorized)		
	0401 Keeper block assembly (No parts authorized)		
	0402 Pressure plate assembly (No parts authorized)		
	0403 Pressure roller assembly (No parts authorized)		
05	Control Panel LA-428A .....	6	2
	0501 V/H board assembly 4A1MP4) (No parts authorized)		
SECTION III.	Special tools list (Not applicable)		
IV.	National stock number and part number index .....	7	

SECTION I

INTRODUCTION

1. Scope

This manual lists spares and repair parts; special tools; special test, measurement, and diagnostic equipment (TMDE), and other special support equipment required for performance of organizational maintenance of the KA-60C. It authorizes the requisitioning and issue of spares and repair parts as indicated by the source and maintenance codes.

2. General

This Repair Parts and Special Tools List is divided into the following sections:

a. Section II. Repair Parts List. A list of spares and repair parts authorized for use in the performance of maintenance. The list also includes parts which must be removed for replacement of the authorized parts. Parts lists are composed of functional groups in numeric sequence, with the parts in each group listed in figure and item number sequence.

b. Section III. Special Tools List. Not applicable.

c. Section IV. National Stock Number and Part Number Index. A list, in National item identification number (NIIN) sequence, of all National stock numbers (NSN) appearing in the listings, followed by a list, in alphameric sequence, of all part numbers appearing in the listings. National stock numbers and part numbers are cross-referenced to each illustration figure and item number appearance.

3. Explanation of Columns

a. Illustration. This column is divided as follows:

(1) Figure number. Indicates the figure number of the illustration on which the item is shown.

(2) Item number. The number used to identify item called out in the illustration.

b. Source, Maintenance, and Recoverability (SMR) Codes.

(1) Source code. Source codes indicate the manner of acquiring support items for maintenance, repair, or overhaul of end items. Source codes are entered in the first and second positions of the Uniform SMR Code format as follows:

Code	Definition
PA-	Item procured and stocked for anticipated or known usage.
XD-	A support item that is not stocked. When required, item will be procured through normal supply channels.

NOTE

**Cannibalization or salvage may be used as a source of supply for any items source coded above except those coded XA and aircraft support items as restricted by AR 700-42.**

(2) Maintenance code. Maintenance codes are assigned to indicate the levels of maintenance authorized to USE and REPAIR support items. The maintenance codes are entered in the third and fourth positions of the Uniform SMR Code format as follows:

(a) The maintenance code entered in the third position will indicate the lowest maintenance level authorized to remove, replace, and use the support item. The maintenance code entered in the third position will indicate one of the following levels of maintenance:

Code	Application/Explanation
O-	Support item is removed, replaced, used at the organizational level.

(b) The maintenance code entered in the fourth position indicates whether the item is to be repaired and identifies the lowest maintenance level with the capability to perform complete repair (i.e., all authorized maintenance functions). This position will contain one of the following maintenance codes:

Code	Application/Explanation
H-	The lowest maintenance level capable of complete repair of the support item is the general support level.
Z-	Nonreparable. No repair is authorized.

(3) Recoverability code. Recoverability codes are assigned to support items to indicate the disposition action on unserviceable items. The recoverability code is entered in the fifth position of the Uniform SMR Code format as follows:

Codes	Definition
Z-	Nonreparable item. When unserviceable, condemn and dispose at the level indicated in position 3.
H-	Reparable item. When uneconomically repairable, condemn and dispose at the general support level.

c. National Stock Number. Indicates the National stock number assigned to the item and will be used for requisitioning purposes.

d. Part Number. Indicates the primary number used by the manufacturer (individual, company, firm, corporation, or Government activity), which controls the design and characteristics of the item

by means of its engineering drawings, specifications, standards, and inspection requirements to identify an item or range of items.

**NOTE**

**When a stock numbered item is requisitioned, the repair part received may have a different part number than the part being replaced.**

e. Federal Supply Code for Manufacturer (FSCM). The FSCM is a 5-digit numeric code listed in SB 708-42 which is used to identify the manufacturer, distributor, or Government agency, etc.

f. Description. Indicates the Federal item name and, if required, a minimum description to identify the item.

g. Unit of Measure (U/M). Indicates the standard of the basic quantity of the listed item as used in performing the actual maintenance function. This measure is expressed by a two-character alphabetical abbreviation (e.g., ea, in, pr, etc). When the unit of measure differs from the unit of issue, the lowest unit of issue that will satisfy the required units of measure will be requisitioned.

h. Quantity Incorporated in Unit. Indicates the quantity of the item used in the breakout shown on the illustration figure, which is prepared for a functional group, subfunctional group, or an assembly.

**4. Special Information**

a. The following publications pertain to the KA-60C and its components: TM 11-6720-242-12, Camera, Still Picture KA-60C.

b. The illustrations in this manual are identical to those published in TM 11-6720-242-34P. Only those parts assigned the third position SMR maintenance code "C" or "O" are listed in the tabular listing; therefore,

there may be a break in the item number sequence. Only illustrations containing organizational authorized items appear in this manual.

**5. How to Locate Repair Parts**

a. When National stock number or part number is unknown.

(1) *First.* Using the table of contents, determine the functional group within which the item belongs. This is necessary since illustrations are prepared for functional groups and listings are divided into the same groups.

(2) *Second.* Find the illustration covering the functional group to which the item belongs.

(3) *Third.* Identify the item on the illustration and note the illustration figure and item number of the item.

(4) *Fourth.* Using the Repair Parts Listing, find the figure and item number noted on the illustration.

b. When National stock number or part number is known.

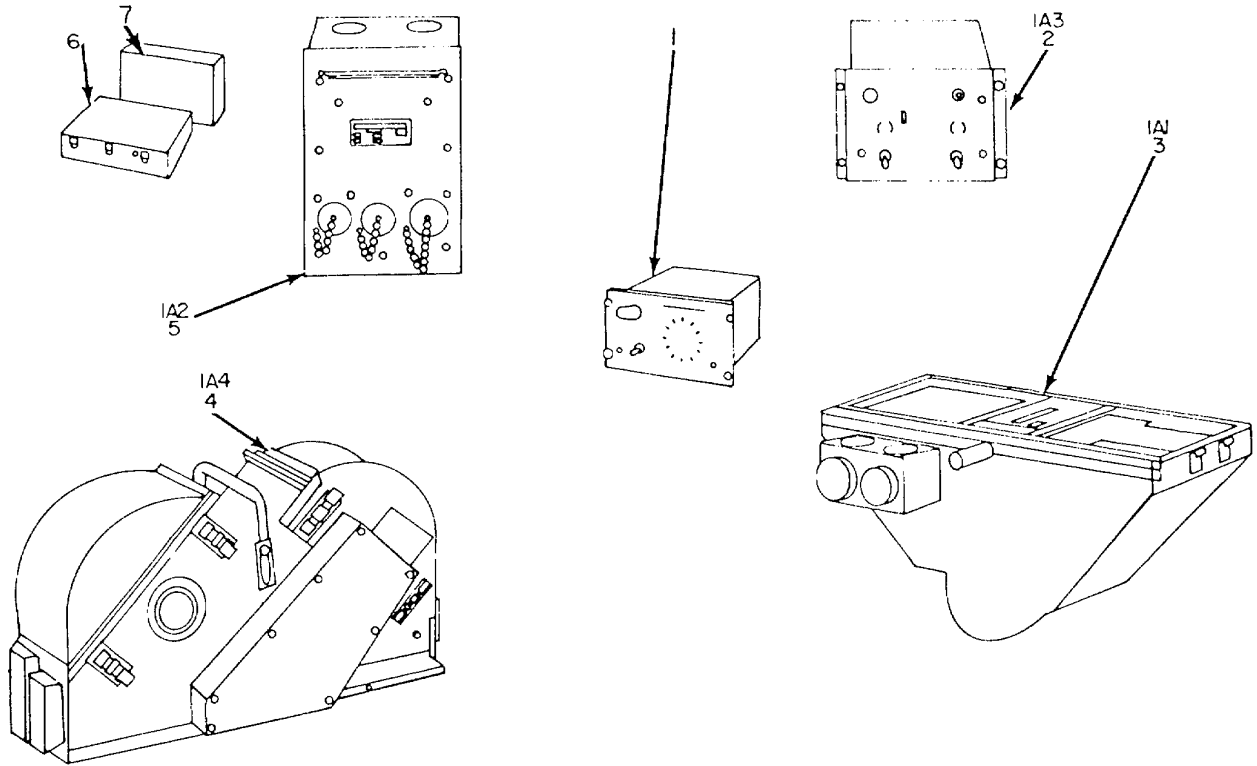
(1) *First.* Using the Index of National Stock Numbers and Part Numbers, find the pertinent National stock number or part number. This index is in NIIN sequence followed by a list of part numbers in alphameric sequence, cross-referenced to the illustration figure number and item number.

(2) *Second.* After finding the figure and item number, locate the figure and item number in the repair parts list.

**6. Abbreviations**

Not applicable.

**(Next printed page is 5)**



EL2CJ001

Figure 1. Camera, Still Picture KA-60C.

(1) ILLUSTRATION		(2)	(3)	(4)	(5)	(6)	(7)	(8)
(a) FIG NO.	(b) ITEM NO.	SMR CODE	NATIONAL STOCK NUMBER	PART NUMBER	FSCM	DESCRIPTION  USABLE ON CODE	U/M	QTY INC IN UNIT
1	1	PADHH	6720-00-400-2590	1214D33	72314	GROUP 00 CAMERA, STILL PICTURF K4-60C CONTROL PANEL	EA	1
1	2	PADHH	6760-00-922-5803	1214D1	72314	CONTROL PANEL ASSEMBLY LA-413A	EA	1
1	3	PAOHH	6720-00-890-7608	1214B1	72314	BODY, DRIVE	EA	1
1	4	PAOHH	6760-00-922-5802	1214C1	72314	FILM MAGAZINE	EA	1
1	5	PADHH	6720-00 890-7609	1214D6	72314	CAMERA, CONTROL LA-412A	EA	1
1	6	PADHH	6760-00-413-4392	1214-353	72314	CARRYING CASE, CAMERA	EA	1
1	7	PADHH	6720-00-068-2195	1193B87	72314	COVER, ASSEMBLY, TRANSIT	EA	1



SECTION IV

NATIONAL STOCK NUMBER AND PART NUMBER INDEX

NOTE: LATEST NATIONAL STOCK NUMBER AND PART NUMBER ASSIGNMENTS ARE INCLUDED AT END OF INDEX.

STOCK NUMBER	FIG. NO.	ITEM NO.	STOCK NUMBER	FIG. NO.	ITEM NO.
6720-00-400-2590	1	1	6720-00-890-7609	1	5
5355-00-579-6390	2	17	6760-00-922-5802	1	4
6720-00-890-7608	1	3	6760-00-922-5803	1	2

PART NUMBER	FSCM	FIG. NO.	ITEM NO.	PART NUMBER	FSCM	FIG. NO.	ITEM NO.
MS91528-2F2B	96906	2	17	1214D1	72314	1	2
NE51H	72619	2	18	1214D33	72314	1	1
1214B1	72314	1	3	1214D6	72314	1	5
1214C1	72314	1	4	1214-353	72314	1	6

LATEST NATIONAL STOCK NUMBER ASSIGNMENTS

STOCK NUMBER	FIG. NO.	ITEM NO.
6720-00-068-2195	1	7
6760-00-413-4392	1	6
6210-00-688-5088	2	19

LATEST PART NUMBER ASSIGNMENTS

PART NUMBER	FSCM	FIG. NO.	ITEM NO.
MS25331-4	96906	2	19
1193B87	72314	1	7

By Order of the Secretary of the Army:

Official:

J. C. PENNINGTON  
*Brigadier General, United States Army*  
*The Adjutant General*

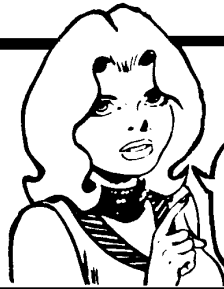
BERNARD W. ROGERS  
*General United States Army*  
*Chief of Staff*

Distribution:

To be distributed in accordance with DA Form 12-31, Section VI, Organizational Maintenance requirements for, OV-1A, B, C and OV-ID aircrafts.



RECOMMENDED CHANGES TO EQUIPMENT TECHNICAL PUBLICATIONS



**SOMETHING WRONG WITH PUBLICATION**

FROM: (PRINT YOUR UNIT'S COMPLETE ADDRESS)

DATE SENT

PUBLICATION NUMBER

PUBLICATION DATE

PUBLICATION TITLE

BE EXACT PIN-POINT WHERE IT IS

PAGE NO.

PARA-GRAPH

FIGURE NO.

TABLE NO.

IN THIS SPACE, TELL WHAT IS WRONG AND WHAT SHOULD BE DONE ABOUT IT.

TEAR ALONG PERFORATED LINE

PRINTED NAME, GRADE OR TITLE AND TELEPHONE NUMBER

SIGN HERE

DA FORM 1 JUL 79 2028-2

PREVIOUS EDITIONS ARE OBSOLETE.

P.S.--IF YOUR OUTFIT WANTS TO KNOW ABOUT YOUR RECOMMENDATION MAKE A CARBON COPY OF THIS AND GIVE IT TO YOUR HEADQUARTERS.

# THE METRIC SYSTEM AND EQUIVALENTS

## Linear Measure

1 centimeter = 10 millimeters = .39 inch  
 1 decimeter = 10 centimeters = 3.94 inches  
 1 meter = 10 decimeters = 39.37 inches  
 1 dekameter = 10 meters = 32.8 feet  
 1 hectometer = 10 dekameters = 328.08 feet  
 1 kilometer = 10 hectometers = 3,280.8 feet

## Square measure

1 sq. centimeter = 100 sq. millimeters = .155 sq. in.  
 1 sq. decimeter = 100 sq. centimeters = 15.5 inches  
 1 sq. meter (centare) = 100 sq. decimeters = 10.76 feet  
 1 sq. dekameter (are) = 100 sq. meters = 1,076.4 sq. ft.  
 1 sq. hectometer (hectare) = 100 sq. dekameters = 2.47 acres  
 1 sq. kilometer = 100 hectometers = .386 sq. miles

## Weights

1 centigram = 10 milligrams = .15 grain  
 1 decigram = 10 centigrams = 1.54 grains  
 1 gram = 10 decigrams = .035 ounce  
 1 dekagram = 10 grams = .35 ounce  
 1 hectogram = 10 dekagrams = 3.52 ounces  
 1 kilogram = 10 hectograms = 2.2 pounds  
 1 quintal = 100 kilograms = 220.46 pounds  
 1 metric ton = 10 quintals = 1.1 short tons

## Liquid Measure

1 dekaliter = 10 liters = 2.64 gallons  
 1 hectoliter = 10 dekaliters = 26.42 gallons  
 1 kiloliter = 10 hectoliters = 264.18 gallons  
 1 liter = 10 deciliters = 33.81 fl. ounces  
 1 centiliter = 10 milliliters = .34 fl. ounce  
 1 deciliter = 10 centiliters = 3.38 fl. ounces  
 1 metric ton = 10 quintals = 1.1 short tons

## Cubic Measure

1 cu. centimeter = 1000 cu. millimeters = .06 cu. inch  
 1 cu. decimeter = 1000 cu. centimeters = 61.02 cu. in.  
 1 cu. meter = 1000 cu. decimeters = 35.31 cu. feet

## Approximate Conversion Factors

To change	To	Multiply by	To change	To	Multiply by
inches	centimeters	2.540	ounce inches	newton-meters	.0070062
feet	meters	.305	centimeters	inches	.394
yards	meters	.914	meters	feet	3.280
miles	kilometers	1.609	meters	yards	1.094
sq. inches	sq. centimeters	6.451	kilometers	miles	.621
sq. feet	sq. meters	.093	sq. centimeters	sq. inches	.155
sq. yards	sq. meters	.836	sq. meters	sq. yards	10.764
sq. miles	sq. kilometers	2.590	sq. kilometers	sq. miles	1.196
acres	sq. hectometers	.405	sq. hectometers	acres	2.471
cubic feet	cubic meters	.028	cubic meters	cubic feet	35.315
cubic yards	cubic meters	.765	milliliters	fluid ounces	.034
fluid ounces	milliliters	29.573	liters	pints	2.113
pints	liters	.472	liters	quarts	1.057
quarts	liters	.946	grams	ounces	.035
gallons	liters	3.785	kilograms	pounds	2.205
ounces	grams	28.349	metric tons	short tons	1.102
pounds	kilograms	.454	pound-feet	newton-meters	1.356
short tons	metric tons	.907			
pound inches	newton-meters	.11296			

## Temperature (Exact)

°F Fahrenheit temperature

5/9 ( after subtracting 32)

Celsius Temperature °C

**PIN: 020059-000**